



EXPLORING A PORTFOLIO OF HIGHLY PROSPECTIVE PROJECTS ON KNOWN NICKEL-COPPER BELTS

NICANLTD.COM | INFO@NICANLTD.COM




- Focused on established mining camps near existing infrastructure – Thompson and Snow Lake in Manitoba, Canada
- Projects are located on geologically significant features, with important discoveries
- Systematically and methodically expanding on historical data to generate new geologic models and drill targets
- Wine Project returning High-Grades near surface
- Experienced Board of Directors, Management and Advisory team



 Backed by Experienced Investors and Institutions

 Management Aligned ~20% Insider Ownership

 81.4 Million Shares Outstanding

Focused on strategically located Critical Metals, positioning for the global transition to electrification and decarbonization

Shares Outstanding	81,698,902
Options (@\$0.25/sh)	3,000,000
Options (@\$0.11/sh)	3,600,000
Broker Warrants (@\$0.10/sh)	840,000
Fully Diluted	89,138,902



TSXv:NICN / OTCQB:NILTF / FRA:W8Y



EXPLORING A PORTFOLIO OF HIGHLY PROSPECTIVE PROJECTS ON KNOWN NICKEL-COPPER BELTS

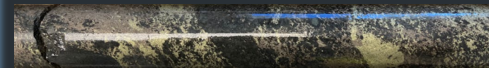
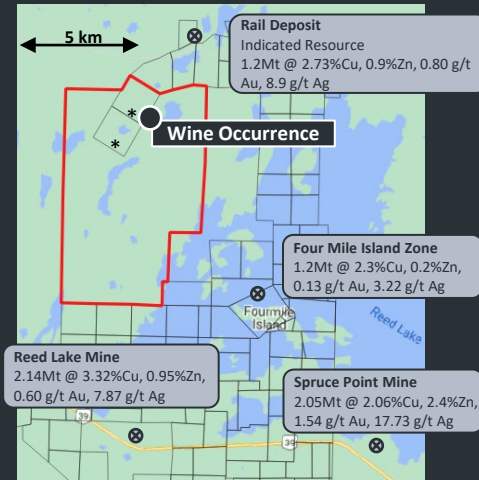
NICANLTD.COM | INFO@NICANLTD.COM

WINE PROJECT

- The Wine Project is in close proximity to other deposits – Reed Lake mine, Spruce Point mine and Rail deposit
- High Nickel and Copper grades intersected near surface
- High-definition UAV Magnetometer, VTEM and TDEM surveys completed
- Multiple untested targets identified within the Wine Gabbro

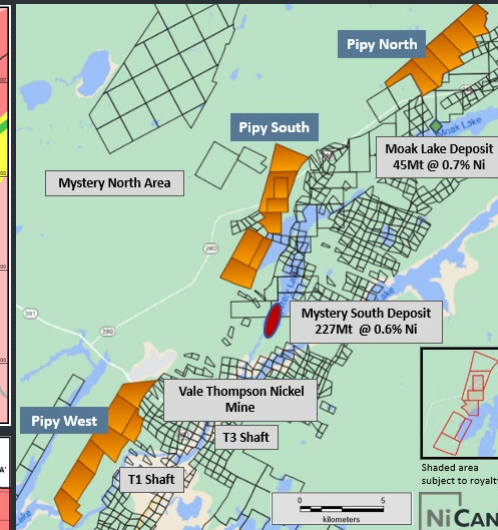
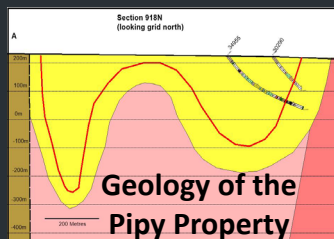
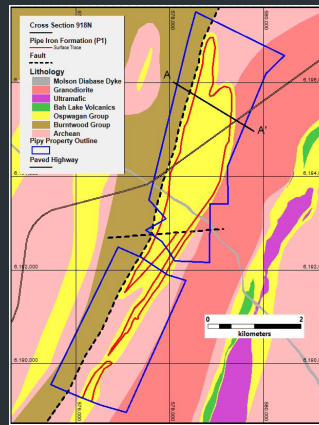
Highlights from NiCAN's Drilling Campaigns:

- 45.45m of 1.32% Ni, 1.20% Cu (1.55% NiEq), 0.06% Co, 0.59 g/t PGMs
- 31.5m of 1.93% Ni, 1.90% Cu (2.32% NiEq), 0.07% Co, 0.6g/t PGMs
- 23.5m of 1.59% Ni, 1.76% Cu (1.98% NiEq), 0.07% Co, 0.51g/t PGMs
- 27.3m of 2.01% Ni, 1.81% Cu (2.35% NiEq), 0.09% Co, 0.54g/t PGMs



PIPY PROJECT

- Pipy property is contiguous to the Vale Thompson Nickel Mine claims
- Pipy South project is underlain by the Pipe Formation, which hosts the Thompson Nickel Mine (estimated at 150Mt at 2.32% Ni)
- Historical drill logs indicate Nickel Sulphides
- Excellent infrastructure and access
- High-definition UAV Magnetometer survey completed
- Phase 1 exploration program designed – awaiting permitting



Note: Visit www.nicanltd.com for additional information and review the Disclaimer and Cautionary Statements slides in the corporate presentation.



TSXv:NICN / OTCQB:NILTF / FRA:W8Y